

SONHO CAST IRON PUMP - 6 mainly characters

1. Full series adopted **Stainless Steel Shaft and Impeller**.
2. Dry motors design, and with **AC protector** for motor protection.
3. All cables are injected with **EPOXY** resin sealed water-resistant cables base.
4. Full series use F grade insulation motor and SIC Mechanical Seal.
5. All assembly process examined by precise electronic leakage instrument for high QC.
6. All assembly components are made in Taiwan.

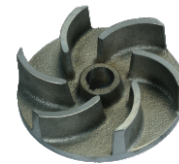
BCF Series Sewage / Wastewater / Non-Clogging Pump

Applications: Drain accumulated water and wastewater from husbandry, industry, basement, food factory...etc.

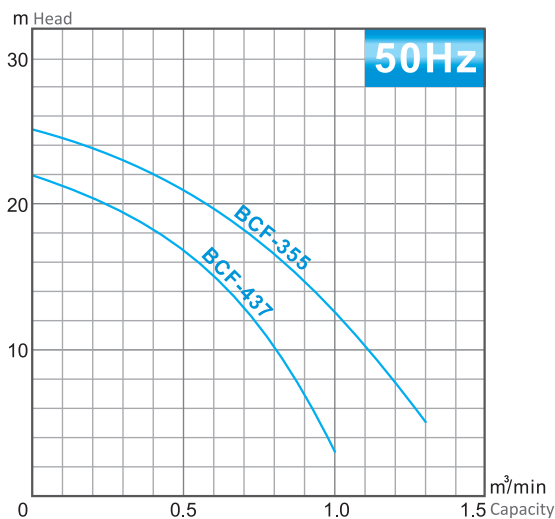


BCF-437

BCF-355



Stainless Steel Impeller



Spec. / Model	BCF-437	BCF-355
Discharge	80mm	80/100mm
Liquid	Sewage and Wastewater	
Temp.	0~40°C	
Motor	Freq. / Voltage	50Hz / 200V~460V
	Motor type	Dry Motor
	Pole	2P
	Protect	AC Protector
Pump	Shaft	SUS410
	Mech. Seal	SIC / SIC
	Impeller	Stainless Steel
	Pump Housing	FC-20

SPECIFICATIONS

Model	Output Hp(kW)	Discharge inch	Phase ϕ	Standard		Free Passage mm	Length mm	Width mm	Height mm	Weight kg
				Head m	Capacity m³/min					
BCF-437	5 (3.7)	3"	3 ϕ	17	0.5	60	500	260	550	62
BCF-355	7½ (5.5)	3"-4"	3 ϕ	21	0.5	65	500	260	580	67